

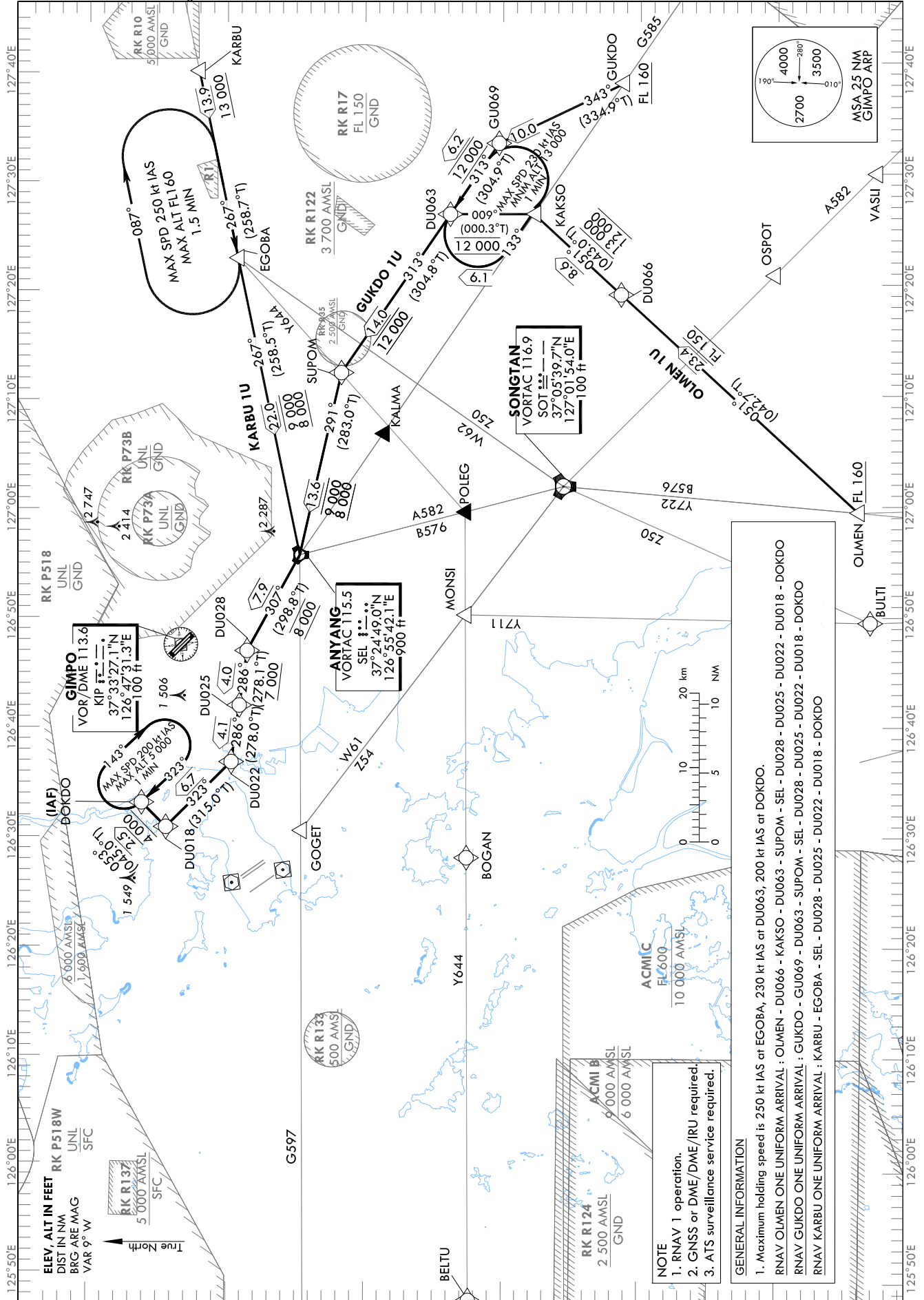
STANDARD ARRIVAL CHART
INSTRUMENT (STAR) - ICAO

TRANSITION ALT 14 000
TRANSITION LVL FL 140

SEOUL APP 119.75
119.1
GIMPO TWR 118.1
118.05

SEOUL/Gimpo Intl(RKSS)
RWY 14L/R
RNAV OLMEN 1U
RNAV GUKDO 1U, RNAV KARBU 1U

Note : Arrival under ICAO Flight Procedure.



Change : Establishment of upper limits ALT(OLMEN, GUKDO) and Information of limits ALT(DU028).

NOTE
1. RNAV 1 operation.
2. GNSS or DME/DME/IRU required.
3. ATS surveillance service required.

GENERAL INFORMATION
1. Maximum holding speed is 250 kt IAS at EGOBA, 230 kt IAS at DU063, 200 kt IAS at DOKDO.
RNAV OLMEN ONE UNIFORM ARRIVAL : OLMEN - DU063 - SUPOM - SEL - DU028 - DU025 - DU022 - DU018 - DOKDO
RNAV GUKDO ONE UNIFORM ARRIVAL : GUKDO - GU069 - KAKSO - SUPOM - SEL - DU028 - DU025 - DU022 - DU018 - DOKDO
RNAV KARBU ONE UNIFORM ARRIVAL : KARBU - EGOBA - SEL - DU028 - DU025 - DU022 - DU018 - DOKDO

SEOUL/Gimpo Intl(RKSS)
RWY 14L/R
RNAV OLMEN 1U, RNAV GUKDO 1U

AERONAUTICAL DATA TABULATION

Standard Instrument Arrival Procedure Coding Tables

RNAV OLMEN 1U												
Serial Number	Path Descriptor	Waypoint Identifier	Fly-over	Course/Track °M(°T)	Distance (NM)	Turn direction	Altitude (ft)	Speed (kt)	Coordinates	VPA/RDH	Navigation specification	Remarks
001	IF	OLMEN	-	-	-	-	+FL 160	-	36°44'13.4"N 126°59'27.6"E	-	RNAV 1	-
002	TF	DU066	-	051 (042.7)	23.4	-	@FL 150	-	37°01'25.6"N 127°19'16.4"E	-	RNAV 1	-
003	TF	KAKSO	-	051 (043.0)	8.6	-	-13 000 +12 000	-250	37°07'44.6"N 127°26'37.4"E	-	RNAV 1	Bank angle 25°
004	TF	DU063	-	009 (000.3)	6.1	-	@12 000	-250	37°13'49.2"N 127°26'39.5"E	-	RNAV 1	Bank angle 25°
005	TF	SUPOM	-	313 (304.8)	14.0	-	@12 000	-250	37°21'46.7"N 127°12'17.2"E	-	RNAV 1	-
006	TF	SEL	-	291 (283.0)	13.6	-	-9 000 +8 000	-	37°24'49.0"N 126°55'42.1"E	-	RNAV 1	-
007	TF	DU028	-	307 (298.8)	7.9	-	@8 000	-	37°28'38.4"N 126°46'58.6"E	-	RNAV 1	-
008	TF	DU025	-	286 (278.1)	4.0	-	+7 000	-	37°29'12.0"N 126°42'00.0"E	-	RNAV 1	-
009	TF	DU022	-	286 (278.0)	4.1	-	-	-	37°29'46.6"N 126°36'50.4"E	-	RNAV 1	-
010	TF	DU018	-	323 (315.0)	6.7	-	-	-220	37°34'30.9"N 126°30'53.6"E	-	RNAV 1	-
011	TF	DOKDO	-	053 (045.0)	2.5	-	+4 000	-220	37°36'17.1"N 126°33'07.1"E	-	RNAV 1	IAF

RNAV GUKDO 1U												
Serial Number	Path Descriptor	Waypoint Identifier	Fly-over	Course/Track °M(°T)	Distance (NM)	Turn direction	Altitude (ft)	Speed (kt)	Coordinates	VPA/RDH	Navigation specification	Remarks
001	IF	GUKDO	-	-	-	-	+FL 160	-	37°01'10.9"N 127°38'22.6"E	-	RNAV 1	-
002	TF	GU069	-	343 (334.9)	10.0	-	-	-250	37°10'14.9"N 127°33'04.6"E	-	RNAV 1	-
003	TF	DU063	-	313 (304.9)	6.2	-	@12 000	-250	37°13'49.2"N 127°26'39.5"E	-	RNAV 1	-
004	TF	SUPOM	-	313 (304.8)	14.0	-	@12 000	-250	37°21'46.7"N 127°12'17.2"E	-	RNAV 1	-
005	TF	SEL	-	291 (283.0)	13.6	-	-9 000 +8 000	-	37°24'49.0"N 126°55'42.1"E	-	RNAV 1	-
006	TF	DU028	-	307 (298.8)	7.9	-	@8 000	-	37°28'38.4"N 126°46'58.6"E	-	RNAV 1	-
007	TF	DU025	-	286 (278.1)	4.0	-	+7 000	-	37°29'12.0"N 126°42'00.0"E	-	RNAV 1	-
008	TF	DU022	-	286 (278.0)	4.1	-	-	-	37°29'46.6"N 126°36'50.4"E	-	RNAV 1	-
009	TF	DU018	-	323 (315.0)	6.7	-	-	-220	37°34'30.9"N 126°30'53.6"E	-	RNAV 1	-
010	TF	DOKDO	-	053 (045.0)	2.5	-	+4 000	-220	37°36'17.1"N 126°33'07.1"E	-	RNAV 1	IAF

Change : Establishment of upper limits ALT(OLMEN, GUKDO), speed and Information of limits ALT(DU028).

SEOUL/Gimpo Intl(RKSS)
RWY 14L/R
RNAV KARBU 1U

AERONAUTICAL DATA TABULATION

Standard Instrument Arrival Procedure Coding Tables

Serial Number	Path Descriptor	Waypoint Identifier	Fly-over	Course/Track °M(°T)	Distance (NM)	Turn direction	Altitude (ft)	Speed (kt)	Coordinates	VPA/ RDH	Navigation specification	Remarks
001	IF	KARBU	-	-	-	-	-	-	37°31'59.0"N 127°39'52.0"E	-	RNAV 1	-
002	TF	EGOBA	-	267 (258.7)	13.9	-	+13 000	-250	37°29'14.7"N 127°22'45.9"E	-	RNAV 1	-
003	TF	SEL	-	267 (258.5)	22.0	-	-9 000 +8 000	-	37°24'49.0"N 126°55'42.1"E	-	RNAV 1	-
004	TF	DU028	-	307 (298.8)	7.9	-	@8 000	-	37°28'38.4"N 126°46'58.6"E	-	RNAV 1	-
005	TF	DU025	-	286 (278.1)	4.0	-	+7 000	-	37°29'12.0"N 126°42'00.0"E	-	RNAV 1	-
006	TF	DU022	-	286 (278.0)	4.1	-	-	-	37°29'46.6"N 126°36'50.4"E	-	RNAV 1	-
007	TF	DU018	-	323 (315.0)	6.7	-	-	-220	37°34'30.9"N 126°30'53.6"E	-	RNAV 1	-
008	TF	DOKDO	-	053 (045.0)	2.5	-	+4 000	-220	37°36'17.1"N 126°33'07.1"E	-	RNAV 1	IAF

RNAV KARBU 1U

Holding Identification	Path Descriptor	Waypoint Identifier	Fly-over	Course/Track °M(°T)	Distance (NM)	Time (min)	Turn direction	Altitude (ft)	Speed (kt)	Coordinates	VPA/ RDH	Navigation specification	Remarks
RNAV OLIMEN 1U	-	DU063	Y	313 (304.9)	1.0	1.0	L	+13 000	-230	37°13'49.2"N 127°26'39.5"E	-	RNAV 1	-
	-	DOKDO	Y	323 (314.9)	1.0	1.0	R	-5 000 +4 000	-200	37°36'17.1"N 126°33'07.1"E	-	RNAV 1	-
RNAV GUKDO 1U	-	DU063	Y	313 (304.9)	1.0	1.0	L	+13 000	-230	37°13'49.2"N 127°26'39.5"E	-	RNAV 1	-
	-	DOKDO	Y	323 (314.9)	1.0	1.0	R	-5 000 +4 000	-200	37°36'17.1"N 126°33'07.1"E	-	RNAV 1	-
RNAV KARBU 1U	-	EGOBA	Y	267 (258.7)	1.5	1.5	R	-FL 160	-250	37°29'14.7"N 127°22'45.9"E	-	RNAV 1	-
	-	DOKDO	Y	323 (314.9)	1.0	1.0	R	-5 000 +4 000	-200	37°36'17.1"N 126°33'07.1"E	-	RNAV 1	-

HOLDING PROCEDURE

Change : Information of limits ALT(DU028) and Establishment of speed.

INTENTIONALLY

LEFT

BLANK

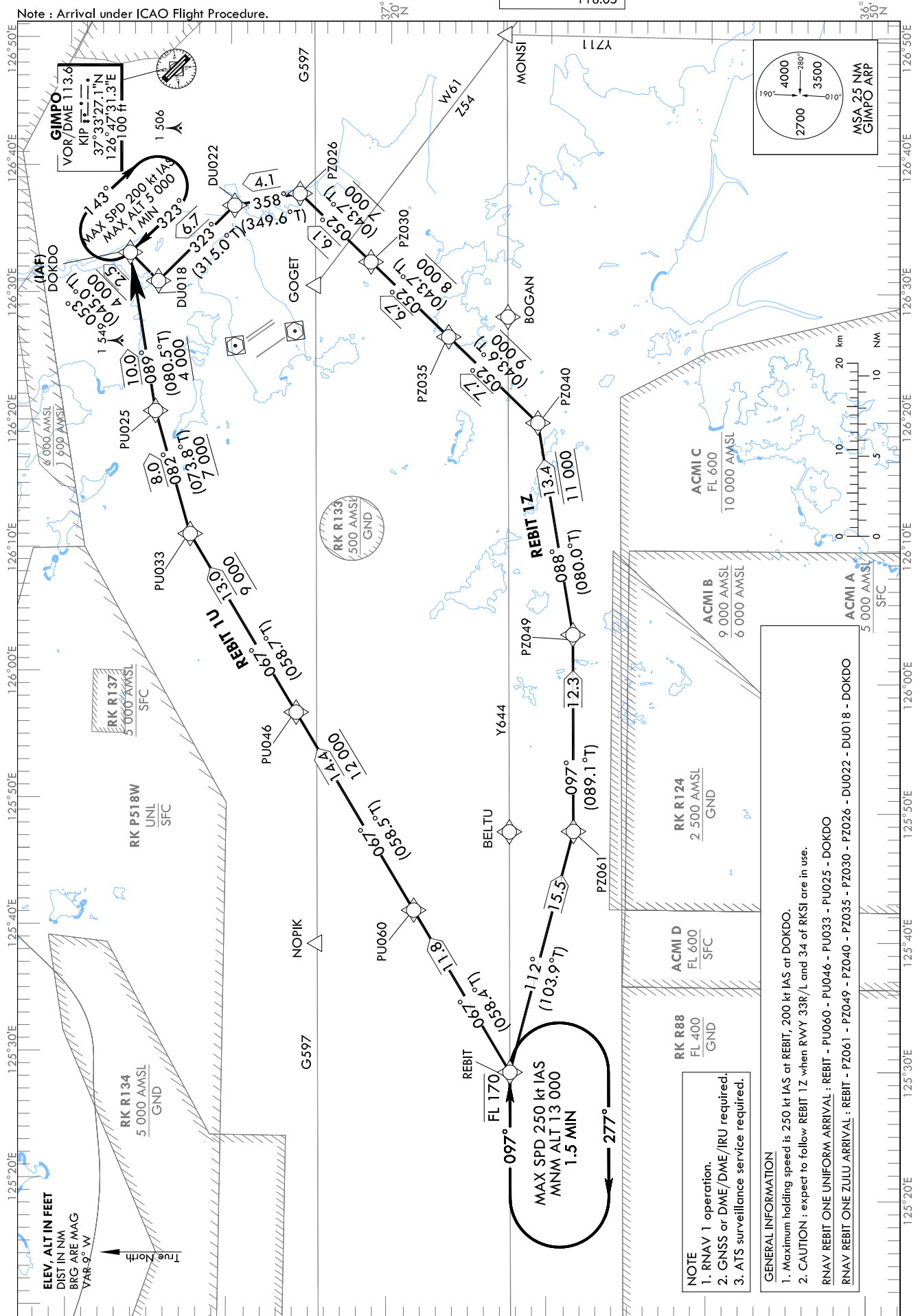
STANDARD ARRIVAL CHART
INSTRUMENT (STAR) - ICAO

TRANSITION ALT 14 000
TRANSITION LVL FL 140

SEOUL APP 119.75
119.1
GIMPO TWR 118.1
118.05

SEOUL/Gimpo Intl(RKSS)
RWY 14L/R
RNAV REBIT 1U, RNAV REBIT 1Z

Note : Arrival under ICAO Flight Procedure.



Change : New procedure.

SEOUL/Gimpo Intl(RKSS)
RWY 14L/R
RNAV REBIT 1U, RNAV REBIT 1Z

AERONAUTICAL DATA TABULATION

Standard Instrument Arrival Procedure Coding Tables

RNAV REBIT 1U												
Serial Number	Path Descriptor	Waypoint Identifier	Fly-over	Course/Track °M(°T)	Distance (NM)	Turn direction	Altitude (ft)	Speed (kt)	Coordinates	VPA/RDH	Navigation specification	Remarks
001	IF	REBIT	-	-	-	-	-FL 170	-	37°12'03.0"N 125°29'12.7"E	-	RNAV 1	-
002	TF	PU060	-	067 (058.4)	11.8	-	-	-	37°18'12.6"N 125°41'46.1"E	-	RNAV 1	-
003	TF	PU046	-	067 (058.5)	14.4	-	+12 000	-	37°25'42.2"N 125°57'09.0"E	-	RNAV 1	-
004	TF	PU033	-	067 (058.7)	13.0	-	+9 000	-	37°32'26.0"N 126°11'04.0"E	-	RNAV 1	-
005	TF	PU025	-	082 (073.8)	8.0	-	+7 000	-	37°34'39.1"N 126°20'42.3"E	-	RNAV 1	-
006	TF	DOKDO	-	089 (080.5)	10.0	-	+4 000	-	37°36'17.1"N 126°33'07.1"E	-	RNAV 1	IAF

RNAV REBIT 1Z												
Serial Number	Path Descriptor	Waypoint Identifier	Fly-over	Course/Track °M(°T)	Distance (NM)	Turn direction	Altitude (ft)	Speed (kt)	Coordinates	VPA/RDH	Navigation specification	Remarks
001	IF	REBIT	-	-	-	-	-FL 170	-	37°12'03.0"N 125°29'12.7"E	-	RNAV 1	-
002	TF	PZ061	-	112 (103.9)	15.5	-	-	-	37°08'17.9"N 125°48'04.6"E	-	RNAV 1	-
003	TF	PZ049	-	097 (089.1)	12.3	-	-	-	37°08'28.1"N 126°03'25.2"E	-	RNAV 1	-
004	TF	PZ040	-	088 (080.0)	13.4	-	@11 000	-	37°10'46.2"N 126°19'55.9"E	-	RNAV 1	-
005	TF	PZ035	-	052 (043.6)	7.7	-	+9 000	-	37°16'22.3"N 126°26'36.8"E	-	RNAV 1	-
006	TF	PZ030	-	052 (043.7)	6.7	-	+8 000	-	37°21'14.9"N 126°32'26.8"E	-	RNAV 1	-
007	TF	PZ026	-	052 (043.7)	6.1	-	+7 000	-	37°25'41.7"N 126°37'46.9"E	-	RNAV 1	-
008	TF	DU022	-	358 (349.6)	4.1	-	-	-	37°29'46.6"N 126°36'50.4"E	-	RNAV 1	-
009	TF	DU018	-	323 (315.0)	6.7	-	-	-220	37°34'30.9"N 126°30'53.6"E	-	RNAV 1	-
010	TF	DOKDO	-	053 (045.0)	2.5	-	+4 000	-220	37°36'17.1"N 126°33'07.1"E	-	RNAV 1	IAF

HOLDING PROCEDURE												
Holding Identification	Path Descriptor	Waypoint Identifier	Fly-over	Course/Track °M(°T)	Distance (NM)	Turn direction	Altitude (ft)	Speed (kt)	Coordinates	VPA/RDH	Navigation specification	Remarks
RNAV REBIT 1U	-	REBIT	Y	097 (089.1)	1.5	R	+13 000	-250	37°12'03.0"N 125°29'12.7"E	-	RNAV 1	-
	-	DOKDO	Y	323 (314.9)	1.0	R	-5 000 +4 000	-200	37°36'17.1"N 126°33'07.1"E	-	RNAV 1	-
RNAV REBIT 1Z	-	REBIT	Y	097 (089.1)	1.5	R	+13 000	-250	37°12'03.0"N 125°29'12.7"E	-	RNAV 1	-
	-	DOKDO	Y	323 (314.9)	1.0	R	-5 000 +4 000	-200	37°36'17.1"N 126°33'07.1"E	-	RNAV 1	-

Change : New procedure.

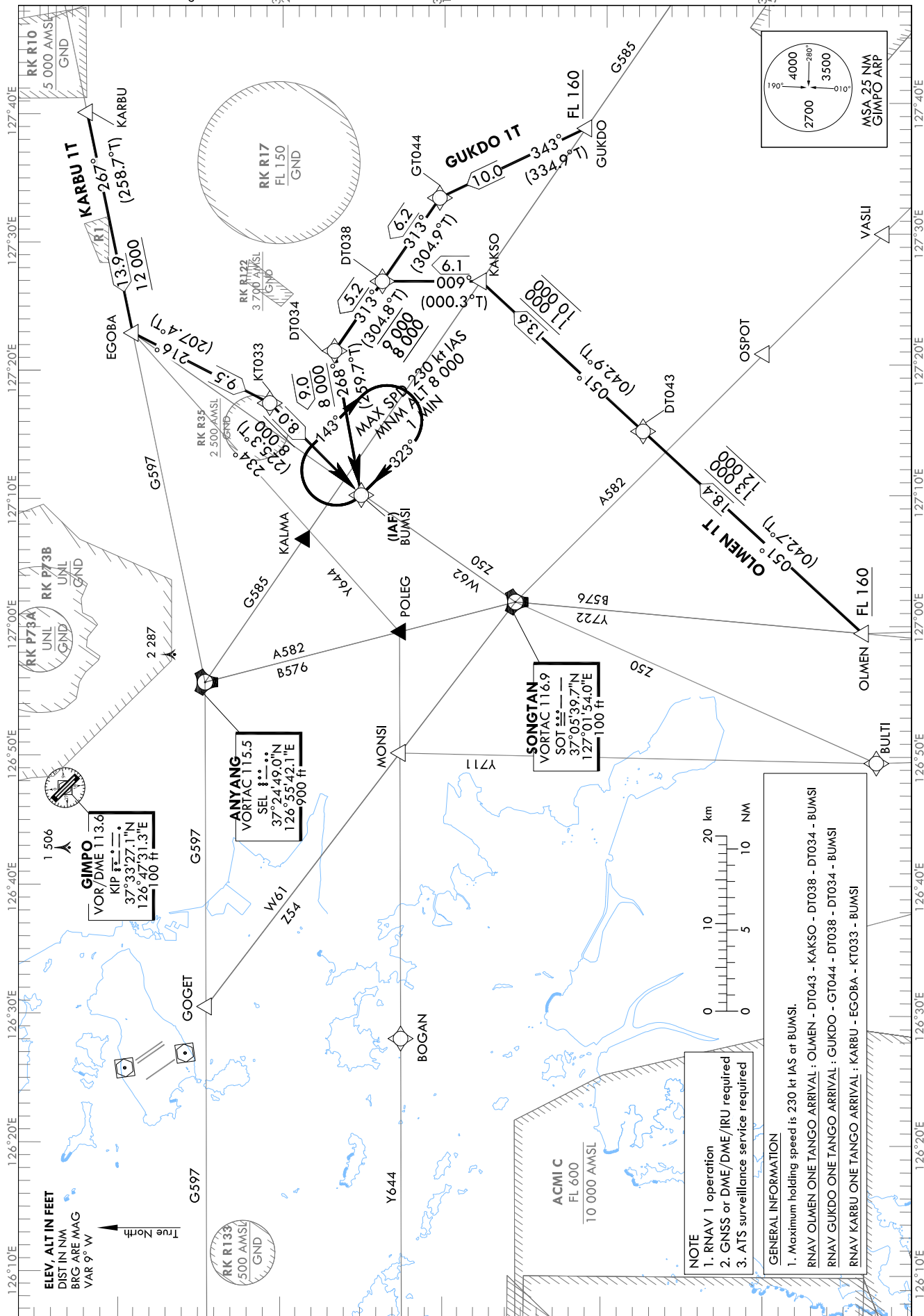
STANDARD ARRIVAL CHART
INSTRUMENT (STAR) - ICAO

TRANSITION ALT 14 000
TRANSITION LVL FL 140

SEOUL APP 119.75
119.1
GIMPO TWR 118.1
118.05

SEOUL/Gimpo Intl(RKSS)
RWY 32L/R
RNAV OLMEN 1T
RNAV GUKDO 1T, RNAV KARBU 1T

Note : Arrival under ICAO Flight Procedure.



Change : Establishment of upper limits ALT(OLMEN).

SEOUL/Gimpo Intl(RKSS)

RWY 32L/R

RNAV OLMEN 1T

RNAV GUKDO 1T, RNAV KARBU 1T

AERONAUTICAL DATA TABULATION

Standard Instrument Arrival Procedure Coding Tables

RNAV OLMEN 1T												
Serial Number	Path Descriptor	Waypoint Identifier	Fly-over	Course/Track °M(°T)	Distance (NM)	Turn direction	Altitude (ft)	Speed (kt)	Coordinates	VPA/ RDH	Navigation specification	Remarks
001	IF	OLMEN	-	-	-	-	+FL 160	-	36°44'13.4"N 126°59'27.6"E	-	RNAV 1	-
002	TF	DT043	-	051 (042.7)	18.4	-	-13 000 +12 000	-	36°57'45.7"N 127°15'01.2"E	-	RNAV 1	-
003	TF	KAKSO	-	051 (042.9)	13.6	-	-11 000 +10 000	-250	37°07'44.6"N 127°26'37.4"E	-	RNAV 1	Bank angle 25°
004	TF	DT038	-	009 (000.3)	6.1	-	-	-250	37°13'49.2"N 127°26'39.5"E	-	RNAV 1	Bank angle 25°
005	TF	DT034	-	313 (304.8)	5.2	-	-9 000 +8 000	-250	37°16'47.4"N 127°21'18.3"E	-	RNAV 1	Bank angle 25°
006	TF	BUMSI	-	268 (259.7)	9.0	-	+8 000	-	37°15'10.2"N 127°10'09.6"E	-	RNAV 1	IAF

RNAV GUKDO 1T												
Serial Number	Path Descriptor	Waypoint Identifier	Fly-over	Course/Track °M(°T)	Distance (NM)	Turn direction	Altitude (ft)	Speed (kt)	Coordinates	VPA/ RDH	Navigation specification	Remarks
001	IF	GUKDO	-	-	-	-	+FL 160	-	37°01'10.9"N 127°38'22.9"E	-	RNAV 1	-
002	TF	GT044	-	343 (334.9)	10.0	-	-	-250	37°10'14.9"N 127°33'04.6"E	-	RNAV 1	-
003	TF	DT038	-	313 (304.9)	6.2	-	-	-250	37°13'49.2"N 127°26'39.5"E	-	RNAV 1	-
004	TF	DT034	-	313 (304.8)	5.2	-	-9 000 +8 000	-250	37°16'47.4"N 127°21'18.3"E	-	RNAV 1	-
005	TF	BUMSI	-	268 (259.7)	9.0	-	+8 000	-	37°15'10.2"N 127°10'09.6"E	-	RNAV 1	IAF

RNAV KARBU 1T												
Serial Number	Path Descriptor	Waypoint Identifier	Fly-over	Course/Track °M(°T)	Distance (NM)	Turn direction	Altitude (ft)	Speed (kt)	Coordinates	VPA/ RDH	Navigation specification	Remarks
001	IF	KARBU	-	-	-	-	-	-	37°31'59.0"N 127°39'52.0"E	-	RNAV 1	-
002	TF	EGOBA	-	267 (258.7)	13.9	-	+12 000	-250	37°29'14.7"N 127°22'45.9"E	-	RNAV 1	-
003	TF	KT033	-	216 (207.4)	9.5	-	-	-250	37°20'48.4"N 127°17'17.1"E	-	RNAV 1	-
004	TF	BUMSI	-	234 (225.3)	8.0	-	+8 000	-	37°15'10.2"N 127°10'09.6"E	-	RNAV 1	IAF

HOLDING PROCEDURE													
Holding Identification	Path Descriptor	Waypoint Identifier	Fly-over	Course/Track °M(°T)	Distance (NM)	Time (min)	Turn direction	Altitude (ft)	Speed (kt)	Coordinates	VPA/ RDH	Navigation specification	Remarks
RNAV OLMEN 1T	HM	BUMSI	Y	323 (315.2)	1.0	1.0	R	+8 000	-230	37°15'10.2"N 127°10'09.6"E	-	RNAV 1	-
RNAV GUKDO 1T	HM	BUMSI	Y	323 (315.2)	1.0	1.0	R	+8 000	-230	37°15'10.2"N 127°10'09.6"E	-	RNAV 1	-
RNAV KARBU 1T	HM	BUMSI	Y	323 (315.2)	1.0	1.0	R	+8 000	-230	37°15'10.2"N 127°10'09.6"E	-	RNAV 1	-

Change : Establishment of upper limits ALT(OLMEN) and speed .

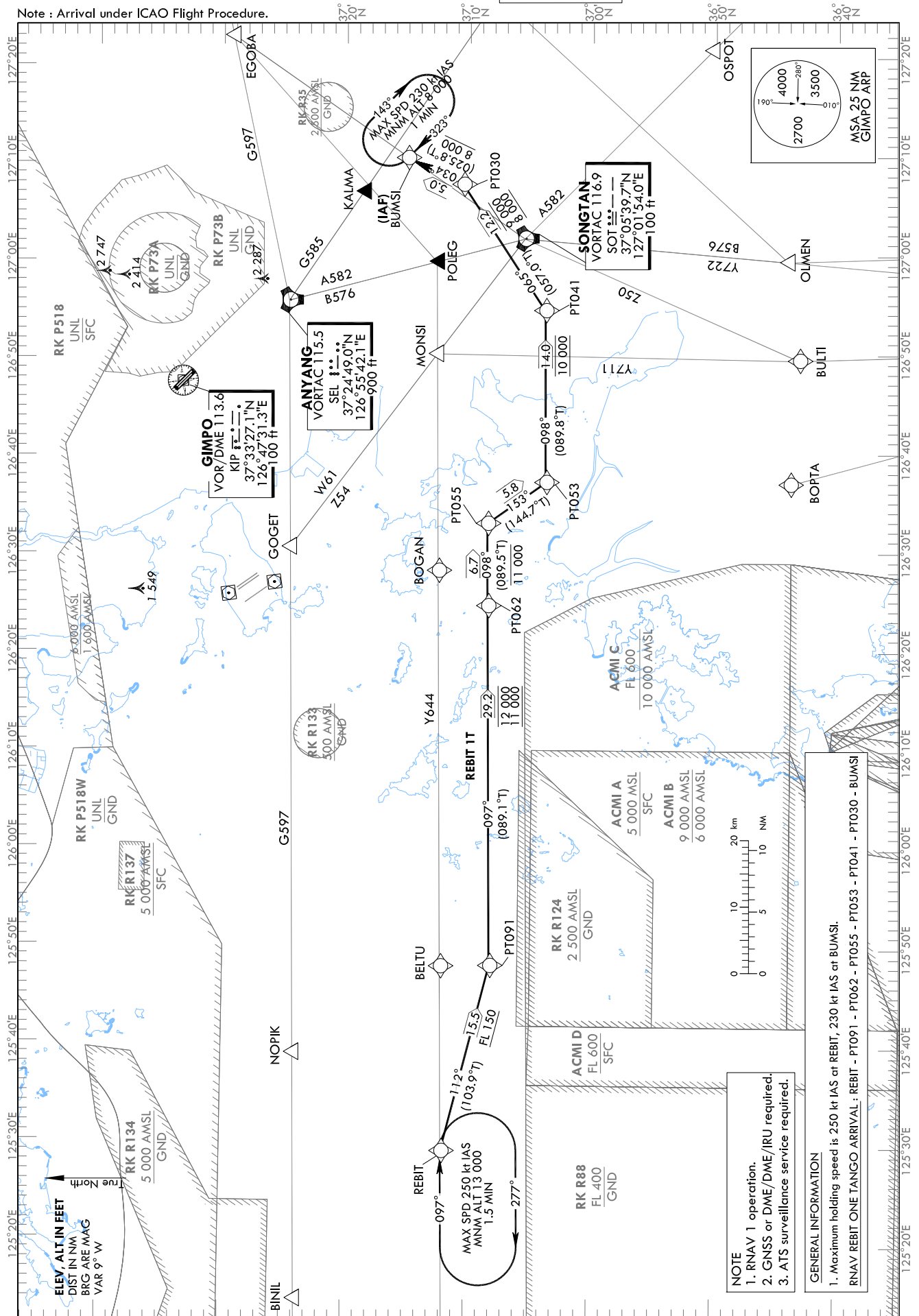
STANDARD ARRIVAL CHART
INSTRUMENT (STAR) - ICAO

TRANSITION ALT 14 000
TRANSITION LVL FL 140

SEOUL APP 119.75
119.1
GIMPO TWR 118.1
118.05

SEOUL/Gimpo Intl(RKSS)
RWY 32L/R
RNAV REBIT 1T

Note : Arrival under ICAO Flight Procedure.



Change : New procedure.

SEOUL/Gimpo Int'l(RKSS)
RWY 32L/R
RNAV REBIT 1T

AERONAUTICAL DATA TABULATION

Standard Instrument Arrival Procedure Coding Tables

Serial Number	Path Descriptor	Waypoint Identifier	Fly-over	Course/Track °M(°T)	Distance (NM)	Turn direction	Altitude (ft)	Speed (kt)	Coordinates	VPA/ RDH	Navigation specification	Remarks
001	IF	REBIT	-	-	-	-	-	-	37°12'03.0"N 125°29'12.7"E	-	RNAV 1	-
002	TF	PT091	-	112 (103.9)	15.5	-	+FL 150	-	37°08'17.9"N 125°48'04.6"E	-	RNAV 1	-
003	TF	PT062	-	097 (089.1)	29.2	-	-12 000 +11 000	-	37°08'38.9"N 126°24'37.4"E	-	RNAV 1	-
004	TF	PT055	-	098 (089.5)	6.7	-	-11 000	-	37°08'42.1"N 126°32'59.3"E	-	RNAV 1	-
005	TF	PT053	-	153 (144.7)	5.8	-	-	-	37°03'58.4"N 126°37'09.6"E	-	RNAV 1	-
006	TF	PT041	-	098 (089.8)	14.0	-	@10 000	-	37°04'00.5"N 126°54'36.0"E	-	RNAV 1	-
007	TF	PT030	-	065 (057.0)	12.2	-	-9 000 +8 000	-	37°10'39.8"N 127°07'26.2"E	-	RNAV 1	-
008	TF	BUMSI	-	034 (025.8)	5.0	-	+8 000	-	37°15'10.2"N 127°10'09.6"E	-	RNAV 1	IAF

HOLDING PROCEDURE

Holding Identification	Path Descriptor	Waypoint Identifier	Fly-over	Course/Track °M(°T)	Time (min)	Turn direction	Altitude (ft)	Speed (kt)	Coordinates	VPA/ RDH	Navigation specification	Remarks
RNAV REBIT 1T	HM	REBIT	Y	097 (089.1)	1.5	R	+13 000	-250	37°12'03.0"N 125°29'12.7"E	-	RNAV 1	-
	HM	BUMSI	Y	323 (315.2)	1.0	R	+8 000	-230	37°15'10.2"N 127°10'09.6"E	-	RNAV 1	-

Change : New procedure.

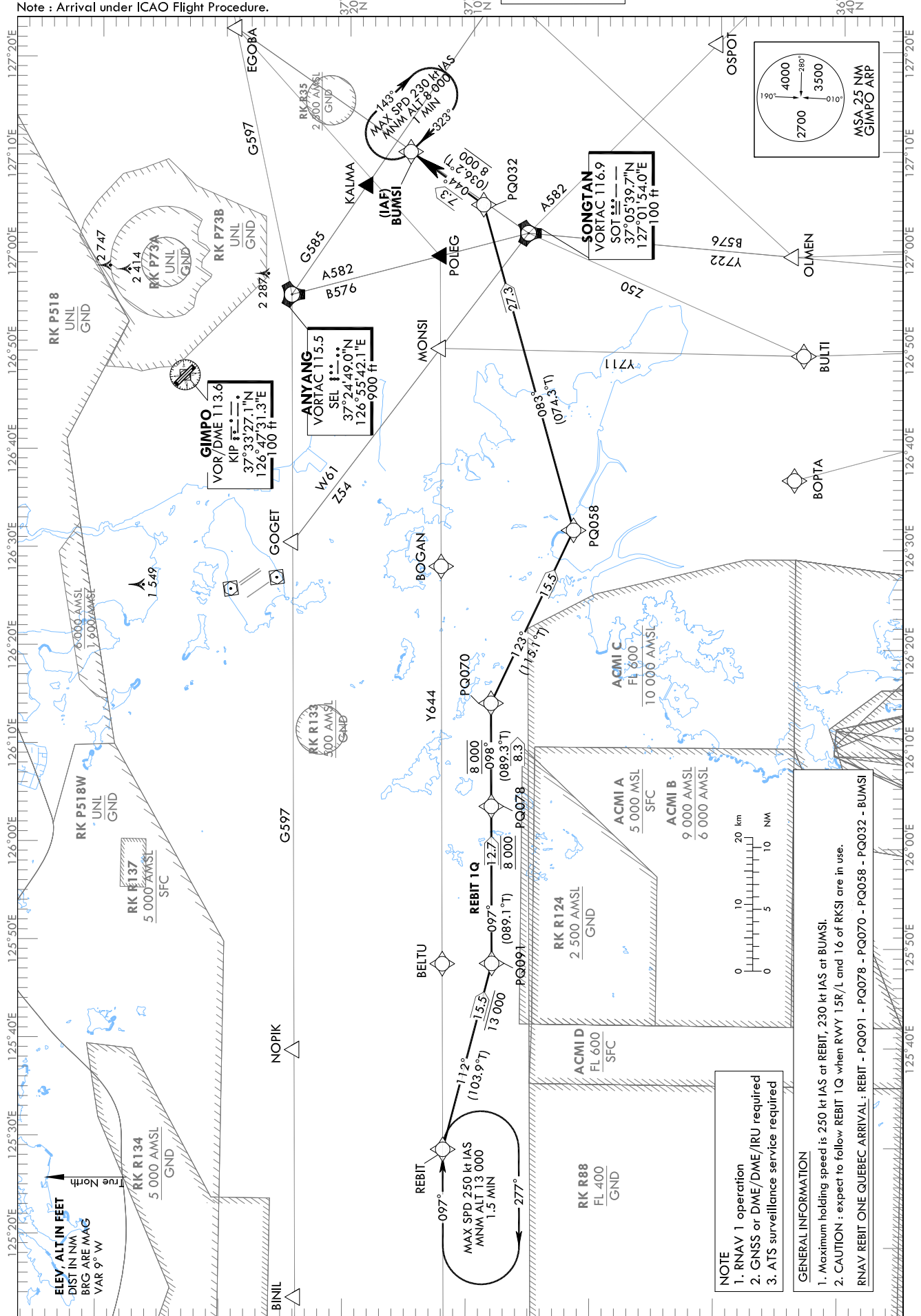
STANDARD ARRIVAL CHART
INSTRUMENT (STAR) - ICAO

TRANSITION ALT 14 000
TRANSITION LVL FL 140

SEOUL APP 119.75
119.1
GIMPO TWR 118.1
118.05

SEOUL/Gimpo Intl(RKSS)
RWY 32L/R
RNAV REBIT 1Q

Note : Arrival under ICAO Flight Procedure.



Change : New procedure.

SEOUL/Gimpo Intl(RKSS)
RWY 32L/R
RNAV REBIT 1Q

AERONAUTICAL DATA TABULATION

Standard Instrument Arrival Procedure Coding Tables

Serial Number	Path Descriptor	Waypoint Identifier	Fly-over	Course/Track °M(°T)	Distance (NM)	Turn direction	Altitude (ft)	Speed (kt)	Coordinates	VPA/ RDH	Navigation specification	Remarks
001	IF	REBIT	-	-	-	-	-	-	37°12'03.0"N 125°29'12.7"E	-	RNAV 1	-
002	TF	PQ091	-	112 (103.9)	15.5	-	-13 000	-	37°08'17.9"N 125°48'04.6"E	-	RNAV 1	-
003	TF	PQ078	-	097 (089.1)	12.7	-	@8 000	-	37°08'28.4"N 126°03'57.4"E	-	RNAV 1	-
004	TF	PQ070	-	098 (089.3)	8.3	-	@8 000	-	37°08'34.2"N 126°14'23.0"E	-	RNAV 1	-
005	TF	PQ058	-	123 (115.1)	15.5	-	-	-	37°01'58.7"N 126°31'54.3"E	-	RNAV 1	-
006	TF	PQ032	-	083 (074.3)	27.3	-	-	-	37°09'17.5"N 127°04'47.1"E	-	RNAV 1	-
007	TF	BUMSI	-	044 (036.2)	7.3	-	+8 000	-	37°15'10.2"N 127°10'09.6"E	-	RNAV 1	IAF

HOLDING PROCEDURE

Holding Identification	Path Descriptor	Waypoint Identifier	Fly-over	Course/Track °M(°T)	Time (min)	Turn direction	Altitude (ft)	Speed (kt)	Coordinates	VPA/ RDH	Navigation specification	Remarks
RNAV REBIT 1Q	HM	REBIT	Y	097 (089.1)	1.5	R	+13 000	-250	37°12'03.0"N 125°29'12.7"E	-	RNAV 1	-
	HM	BUMSI	Y	323 (315.2)	1.0	R	+8 000	-230	37°15'10.2"N 127°10'09.6"E	-	RNAV 1	-

Change : New procedure.

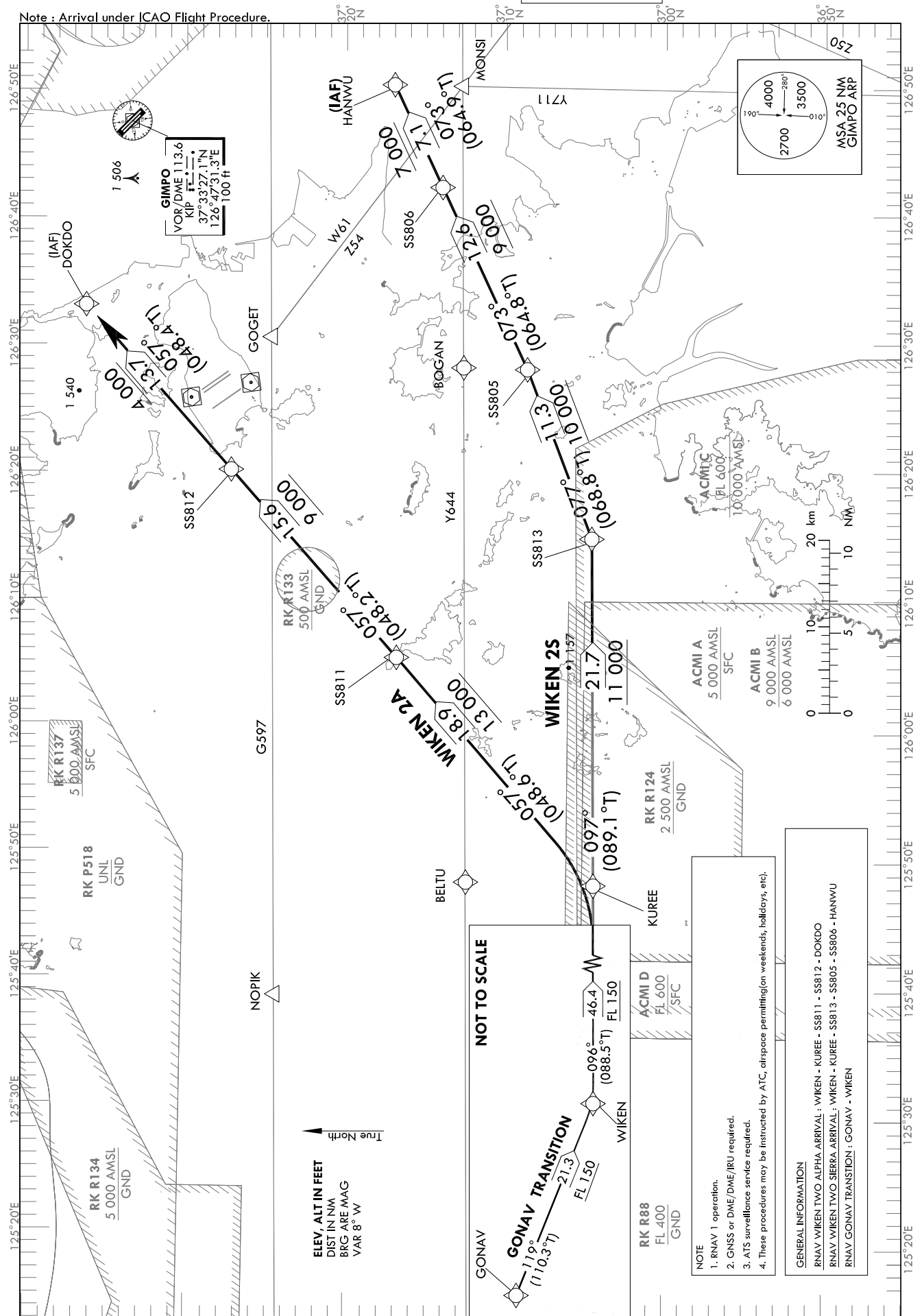
**STANDARD ARRIVAL CHART
INSTRUMENT (STAR) - ICAO**

TRANSITION ALT 14 000
TRANSITION LVL FL 140

SEOUL APP	119.75
GIMPO TWR	118.1
GIMPO	118.05

SEOUL/Gimpo Int'l(RKSS)
RWY 14L/R, RWY 32L/R
RNAV WIKEN 2A, RNAV WIKEN 2S

Note : Arrival under ICAO Flight Procedure.



SEOUL/Gimpo Intl(RKSS)

RWY 14L/R, RWY 32L/R

RNAV WIKEN 2A, RNAV WIKEN 2S, RNAV GONAV TRANSITION

AERONAUTICAL DATA TABULATION

Standard Instrument Arrival Procedure Coding Tables

RNAV WIKEN 2A												
Serial Number	Path Descriptor	Waypoint Identifier	Fly-over	Course/Track °M(°T)	Distance (NM)	Turn direction	Altitude (ft)	Speed (kt)	Coordinates	VPA/RDH	Navigation specification	Remarks
001	IF	WIKEN	-	-	-	-	+FL 150	-	37°03'21.0"N 124°49'51.1"E (R 267 SEL/D103, R 261 KIP/D99)	-	RNAV 1	-
002	TF	KUREE	-	096 (088.5)	46.4	-	+FL 150	-	37°04'17.6"N 125°47'50.3"E (R 258 SEL/D58, R 247 KIP/D56)	-	RNAV 1	-
003	TF	SS811	-	057 (048.6)	18.9	-	+13 000	-	37°16'44.9"N 126°05'33.1"E (R 267 SEL/D41, R 252 KIP/D37)	-	RNAV 1	-
004	TF	SS812	-	057 (048.2)	15.6	-	+9 000	-	37°27'10.1"N 126°20'12.3"E (R 246 SEL/D38, R 262 KIP/D23)	-	RNAV 1	-
005	TF	DOKDO	-	057 (048.4)	13.7	-	+4 000	-	37°36'17.1"N 126°33'07.1"E (R 311 SEL/D21, R 292 KIP/D12)	-	RNAV 1	IAF

RNAV WIKEN 2S												
Serial Number	Path Descriptor	Waypoint Identifier	Fly-over	Course/Track °M(°T)	Distance (NM)	Turn direction	Altitude (ft)	Speed (kt)	Coordinates	VPA/RDH	Navigation specification	Remarks
001	IF	WIKEN	-	-	-	-	+FL 150	-	37°03'21.0"N 124°49'51.1"E (R 267 SEL/D103, R 261 KIP/D99)	-	RNAV 1	-
002	TF	KUREE	-	096 (088.5)	46.4	-	+FL 150	-	37°04'17.6"N 125°47'50.3"E (R 258 SEL/D58, R 247 KIP/D56)	-	RNAV 1	-
003	TF	SS813	-	097 (089.1)	21.7	-	+11 000	-	37°04'34.8"N 126°14'54.2"E (R 246 SEL/D38, R 230 KIP/D39)	-	RNAV 1	-
004	TF	SS805	-	077 (068.8)	11.3	-	+10 000	-	37°08'40.3"N 126°28'06.7"E (R 242 SEL/D27, R 285 SOT/D27)	-	RNAV 1	-
005	TF	SS806	-	073 (064.8)	12.6	-	+9 000	-	37°14'00.7"N 126°42'19.8"E (R 233 SEL/D15, R 200 KIP/D20)	-	RNAV 1	-
006	TF	HANWU	-	073 (064.9)	7.1	-	+7 000	-	37°17'00.6"N 126°50'21.9"E (R 217 SEL/D9, R 180 KIP/D17)	-	RNAV 1	IAF

RNAV GONAV TRANSITION												
Serial Number	Path Descriptor	Waypoint Identifier	Fly-over	Course/Track °M(°T)	Distance (NM)	Turn direction	Altitude (ft)	Speed (kt)	Coordinates	VPA/RDH	Navigation specification	Remarks
001	IF	GONAV	-	-	-	-	-	-	37°10'48.4"N 124°24'52.6"E (R 272 SEL/D121, R 267 KIP/D116)	-	RNAV 1	-
002	TF	WIKEN	-	119 (110.3)	21.3	-	+FL 150	-	37°03'21.0"N 124°49'51.1"E (R 267 SEL/D103, R 261 KIP/D99)	-	RNAV 1	-

Change : Page control.